

## RPC for 3DS Max

3DS MAX - R3, R4, R5, R6, R7,R8,R9,2008,2009 & 2010

### Installing the RPC Plug-in

Start by running the RPC Plug-in installer. Be sure to select the correct version of 3D Studio Max when prompted by the installer program. ArchVision recommends that you use the latest version of the RPC Plug-in available for 3D Studio Max for optimum performance. The latest version of the RPC Plug-in can be downloaded from our website by selecting Support and then Software Updates.

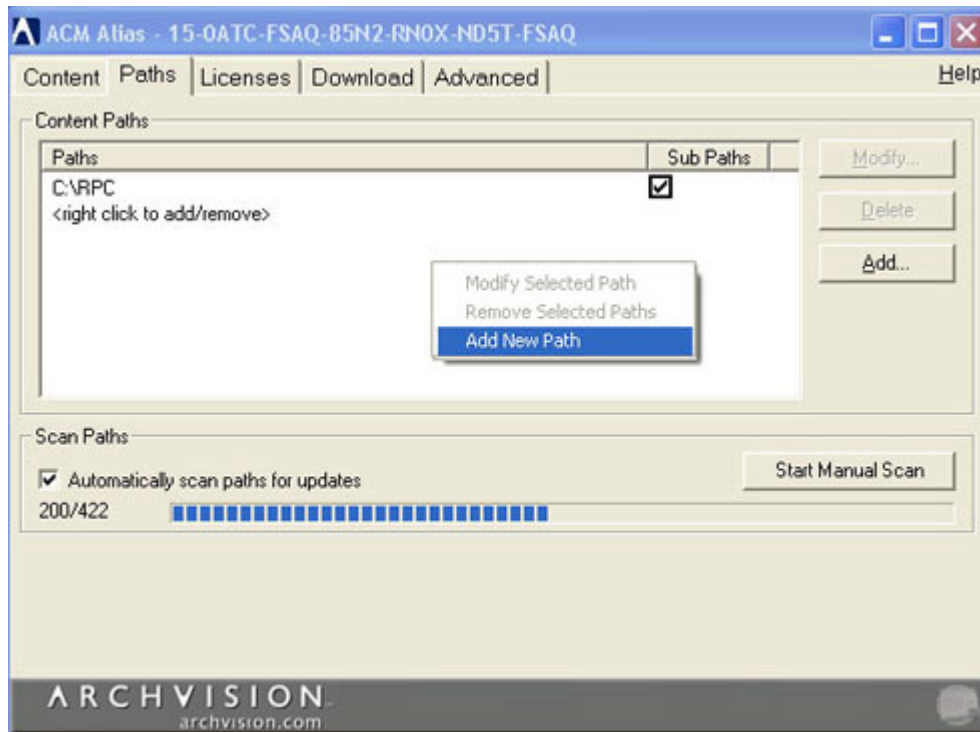
### Configuring Content Paths

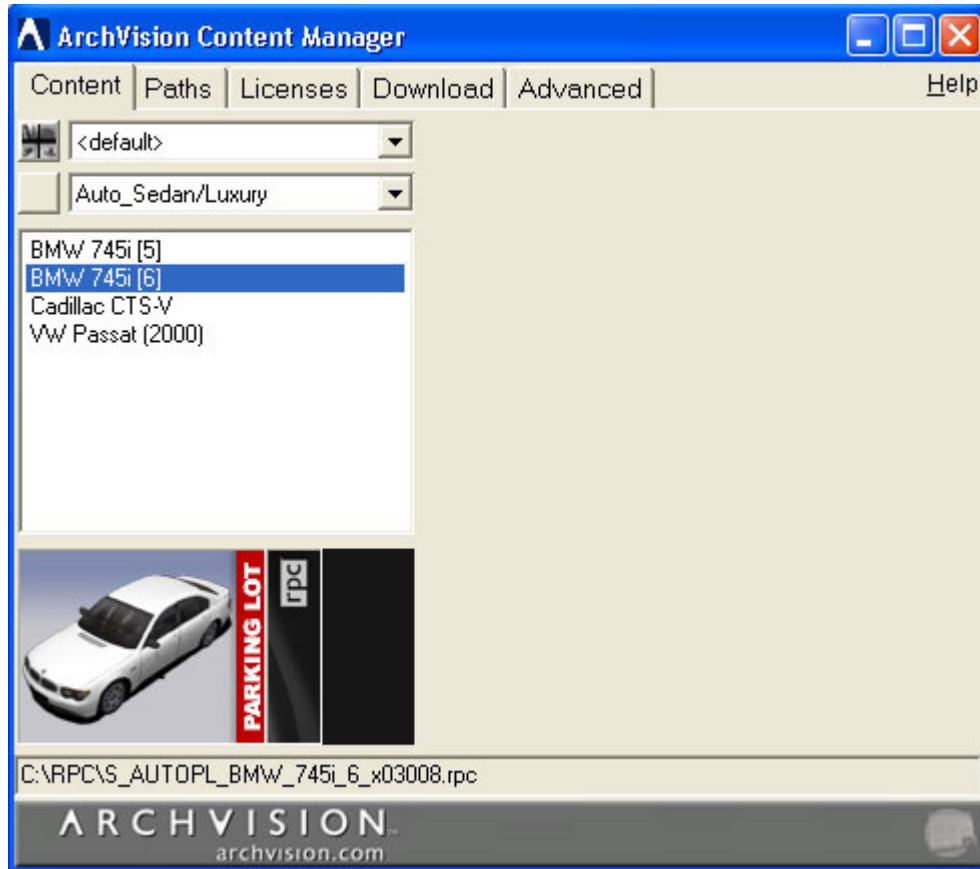
The ArchVision Content Manager (ACM) manages all of your content paths. It is necessary to configure content paths in the ACM to access your RPC Objects. You can access the ACM by double clicking on the icon in the system tray or selecting Start->Programs->ArchVision->ArchVision Content Manager->ArchVision Content Manager.

**Step 1:** Select the Paths Tab

**Step 2:** Select Add a Path and then browse for the location of the RPC Objects.

**Step 3:** Click on Start Manual Scan. All RPC Objects detected will appear under the current content dialog.





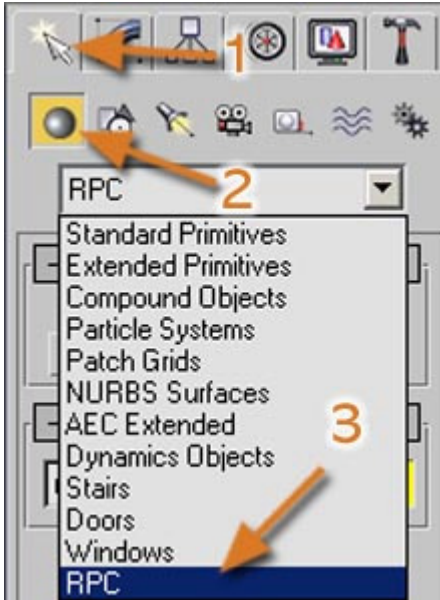
### Accessing the RPC Plug-in

**Step 1:** Select the Create Panel.

**Step 2:** Click on the Geometry icon and then on the drop-down menu.

**Step 3:** Choose RPC.

The RPC Selection Dialog will then appear.



### Configuring the RPC Plug-in

Once the RPC Plug-in has been installed, you will need to configure a path to the ArchVision Content Manager (ACM).

**Step 1:** Select **Configure Content**.

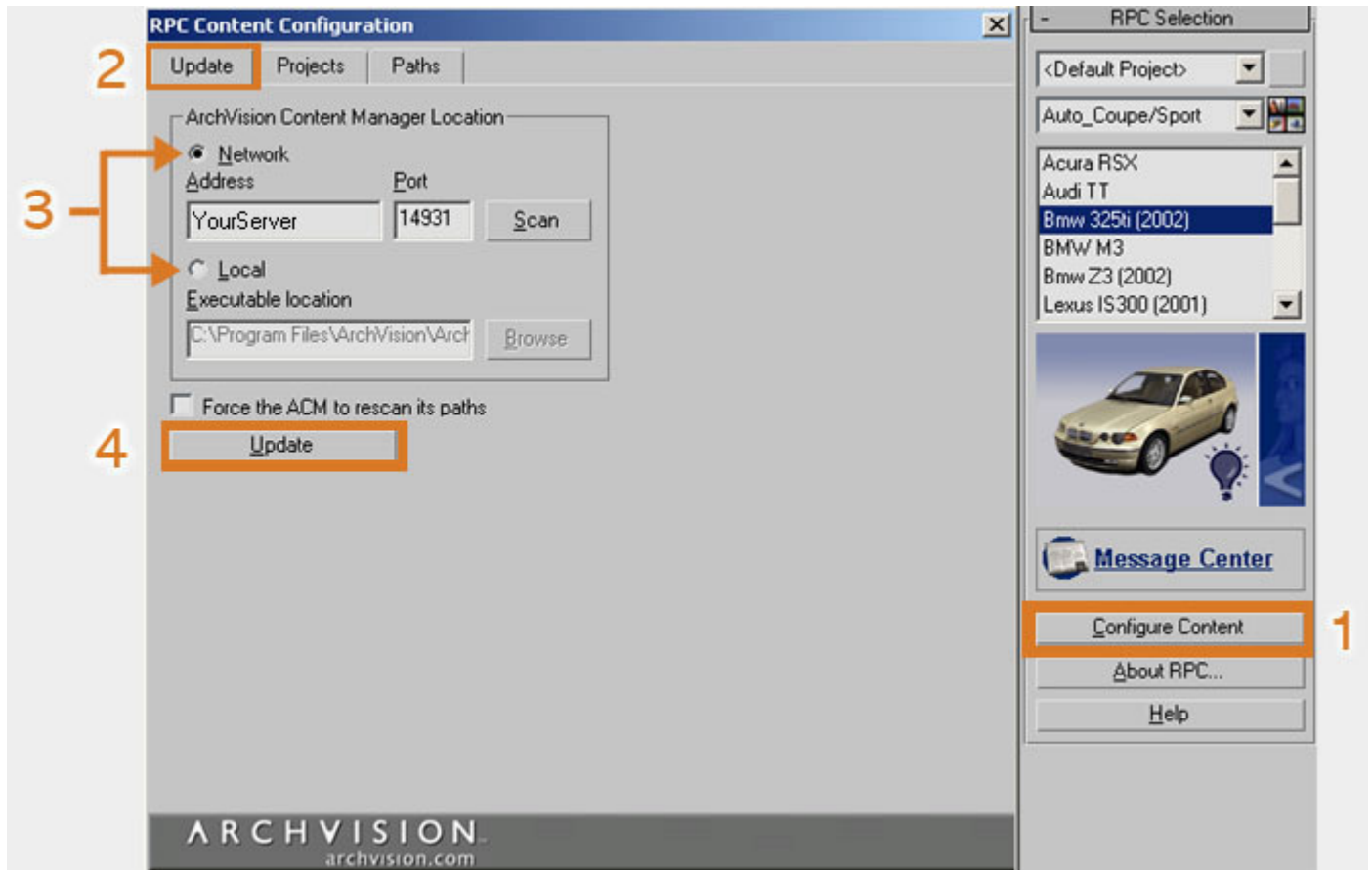
**Step 2:** Click on the **Update** tab.

**Step 3:** Specify a path to the ACM.

**Note:** *If the ACM is located on your network, select Network and then type in the machine name, IP address or select Scan to choose it from a list of available ACMs.*

*If the ACM is installed locally, select Local and browse to C:\Program Files\ArchVision\ArchVision Content Manager, for a file named **rpcACMapp.exe**.*

**Step 4:** Select Update Content. The RPC Content in the path of the ACM will now be available to place in your Max scene.



## Placing RPC Content

To place an RPC object into 3D Studio Max:

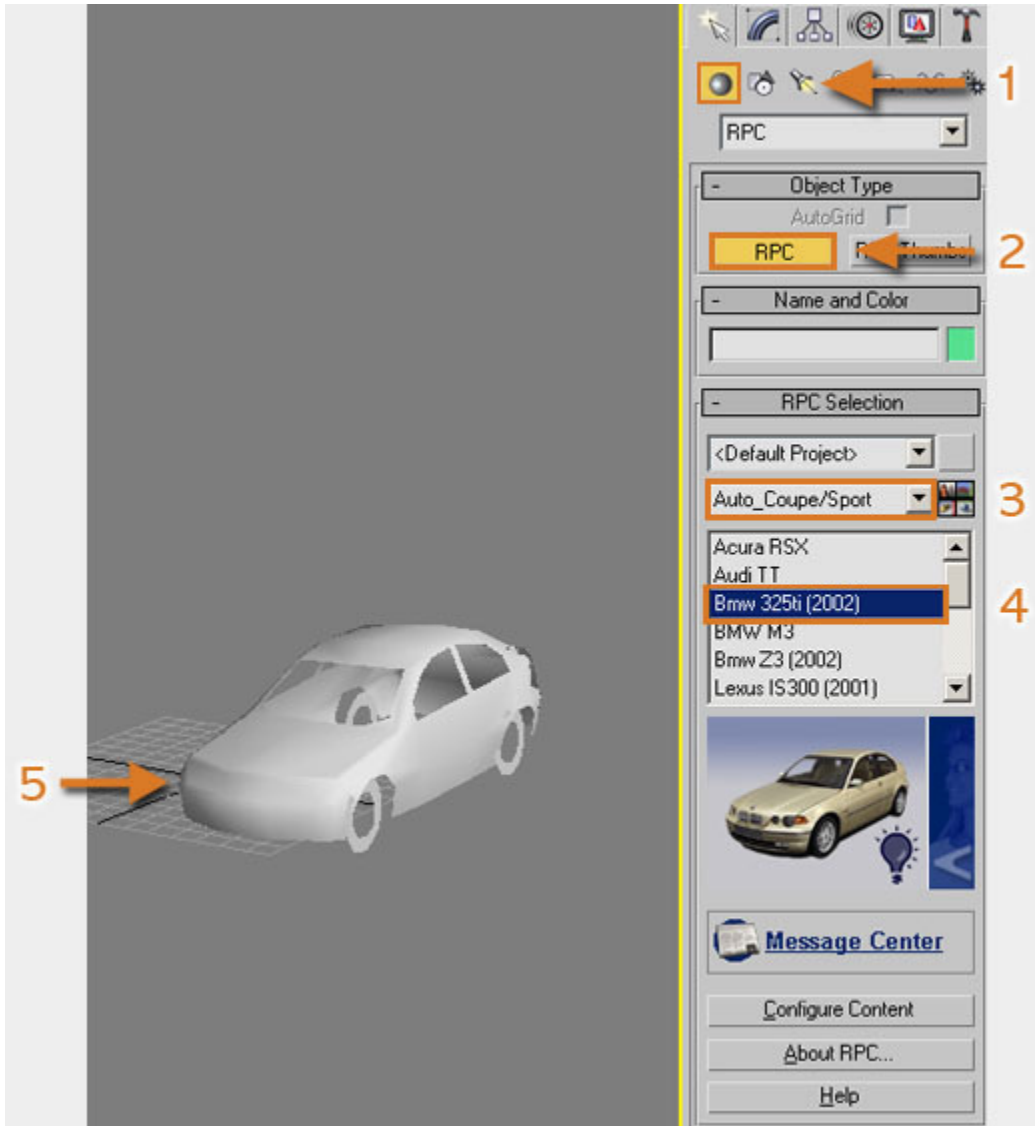
**Step 1:** Select RPC from the Geometry drop-down on the Create Panel.

**Step 2:** Click the RPC button that appears under Object Type. The RPC Selection rollout will then appear.

**Step 3:** Select the desired RPC Library from the drop-down menu.

**Step 4:** Then select the name of the RPC that you would like to place in your scene.

**Step 5:** Place the cursor in scene where the RPC is to appear and hold the left button of the mouse down. Moving the mouse while the left button is depressed will allow you to rotate the direction that the RPC is facing. Release the button when the RPC is positioned as desired.



**For additional assistance using RPC Technology, please visit [www.archvision.com](http://www.archvision.com) or contact our live Support Team Monday-Friday 9am-5pm (EST)**

*Copyright 2009 ArchVision, Inc*