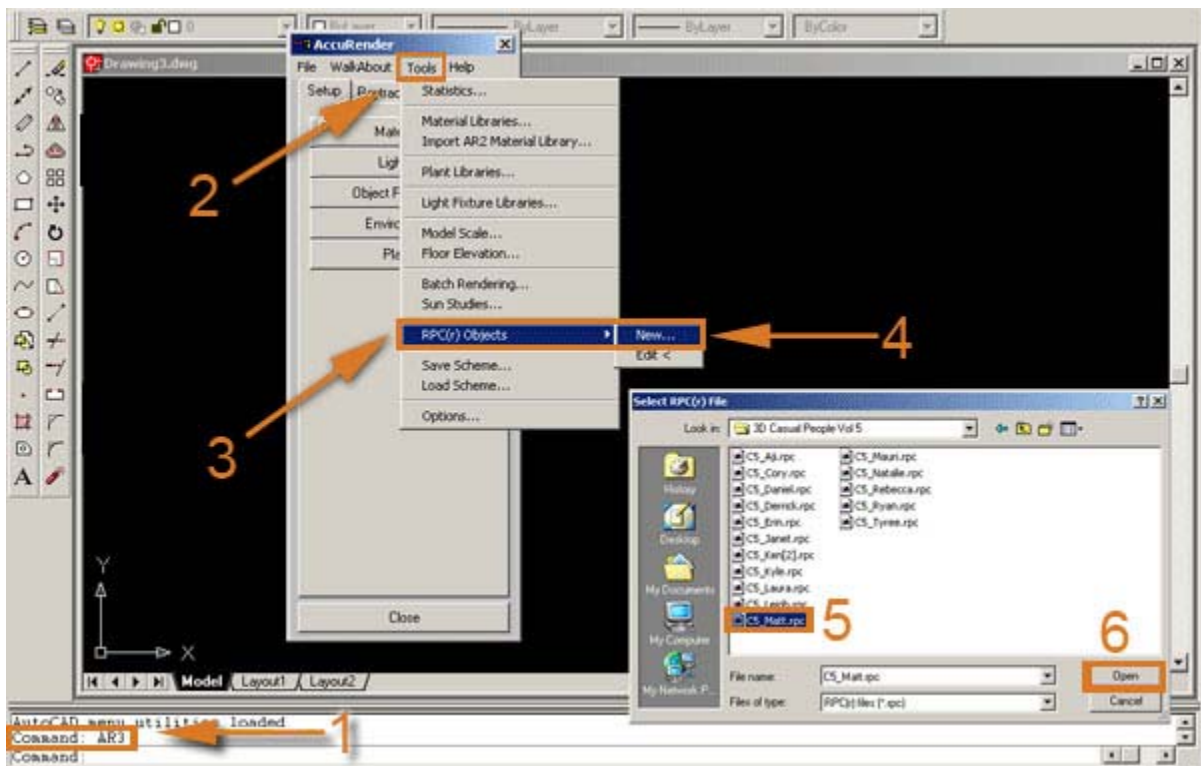


## RPC for Accurender

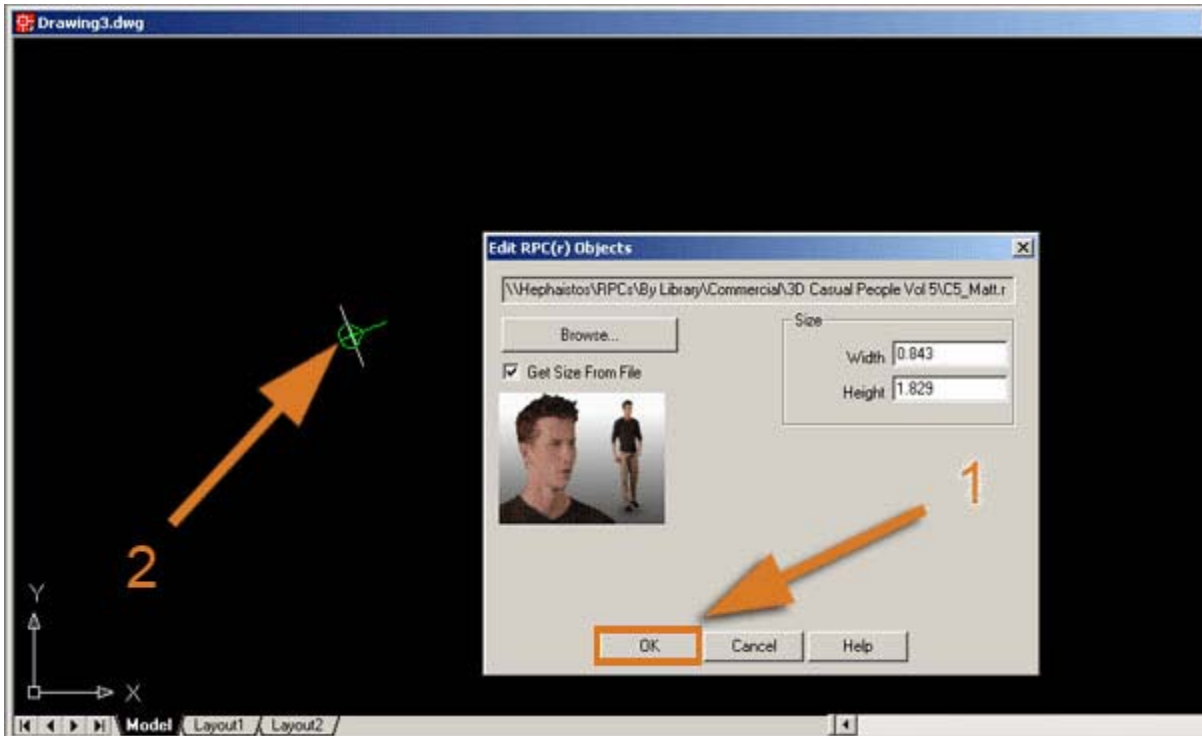
### AccuRender - Build 261 & Higher

- 1) Begin by typing "AR3" or "AR4" (depending on product version) in the command line.
- 2) From the floating menu, select **Tools**.
- 3) Next click on **RPC Object**.
- 4) Then select **New...** and browse for your RPC content.
- 5) Click on the RPC file to be placed.
- 6) Click **Open**.



A dialog box will appear with a preview image of the RPC that has been selected. You may change the RPC by clicking the **Browse** button and selecting a new RPC. Height and Width may also be adjusted.

- 1) Once these settings are as desired, click the **OK** button.
- 2) Click somewhere in the scene and the RPC content icon will then appear. It can then be rotated to the correct direction. Left-click with the mouse when the appropriate position has been reached and the RPC will be placed.



**For additional assistance using RPC Technology, please visit [www.archvision.com](http://www.archvision.com) or contact our live Support Team Monday-Friday 9am-5pm (EST)**

*Copyright 2005 ArchVision, Inc*