

ArchVision Viewport - for Photoshop 5.5 & Higher

Installing ArchVision Viewport

Start by running the ArchVision Viewport installer. Be sure to select the correct version of Photoshop when prompted by the installer dialog.

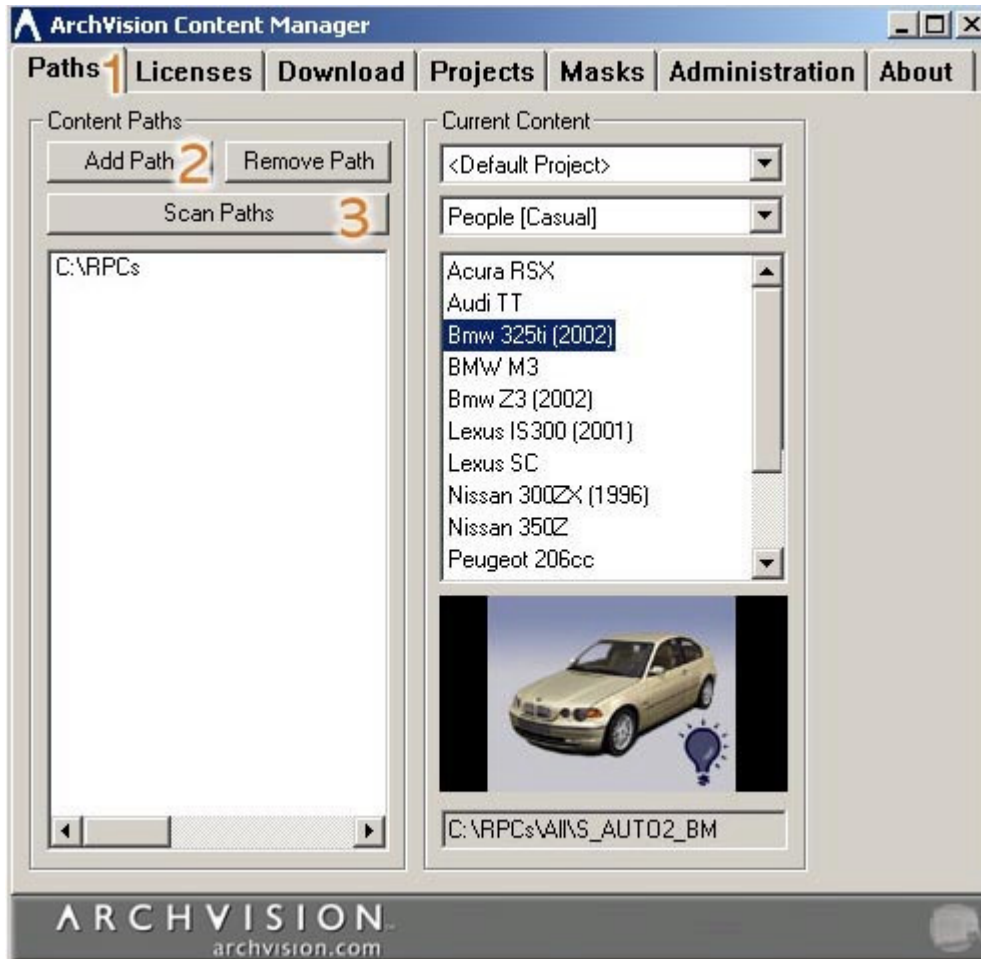
Configuring Content Paths

The ArchVision Content Manager (ACM) manages all of your content paths. It is necessary to configure content paths in the ACM to access your RPC Objects. You can access the ACM by double clicking on the icon in the system tray or selecting Start->Programs->ArchVision->ArchVision Content Manager->ArchVision Content Manager.

Step 1: Select the Paths Tab

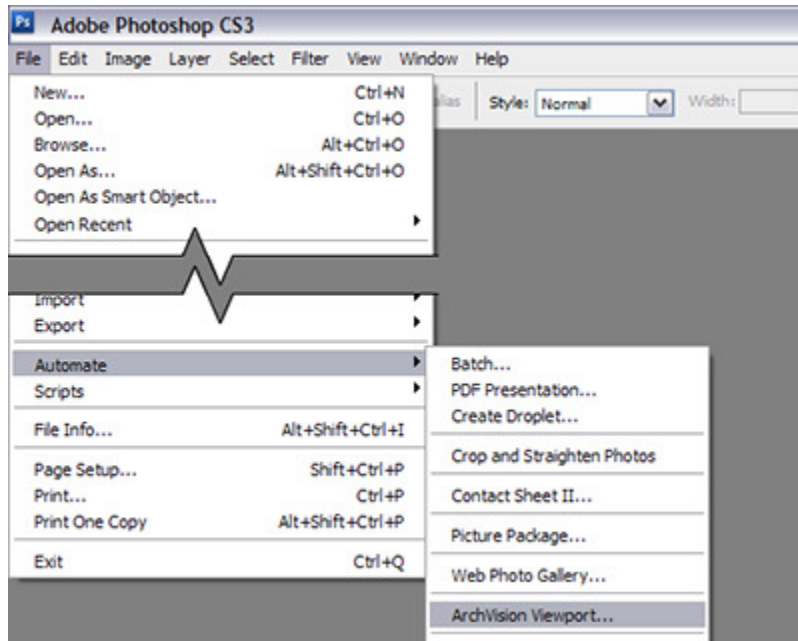
Step 2: Select Add a Path and then browse for the location of the RPC Objects.

Step 3: Choose Scan Paths. All RPC Objects detected will appear under the current content dialog.



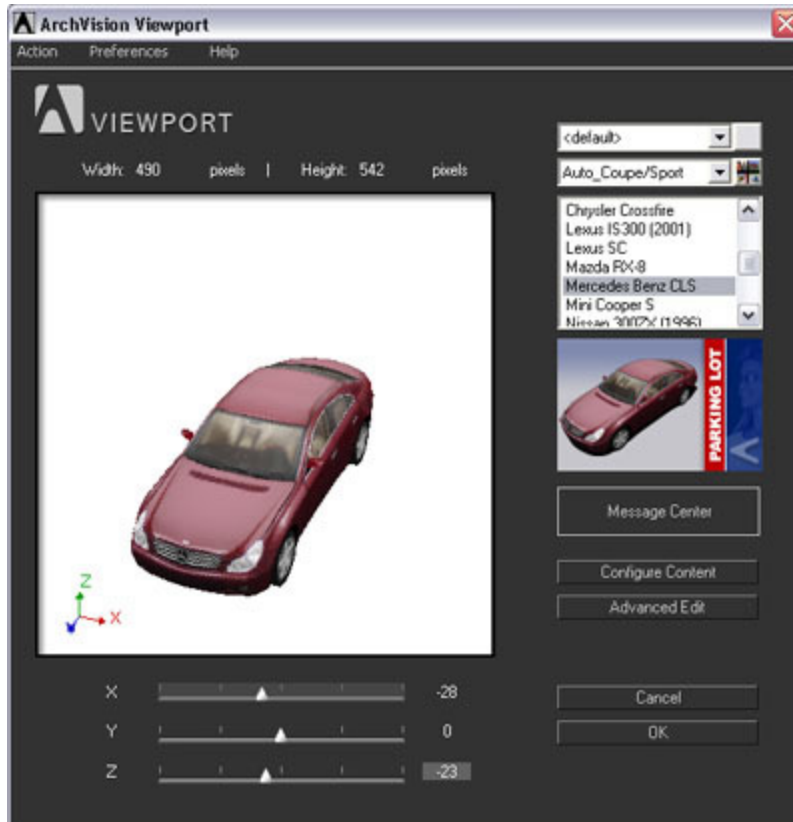
Accessing ArchVision Viewport

To open ArchVision Viewport, first open a Photoshop image. A new image or existing image of any format will do. Next, click on File-->Automate-->ArchVision Viewport. This will reveal the ArchVision Viewport content placement interface. The first time that ArchVision Viewport is accessed it is necessary to configure it to connect to an ACM.



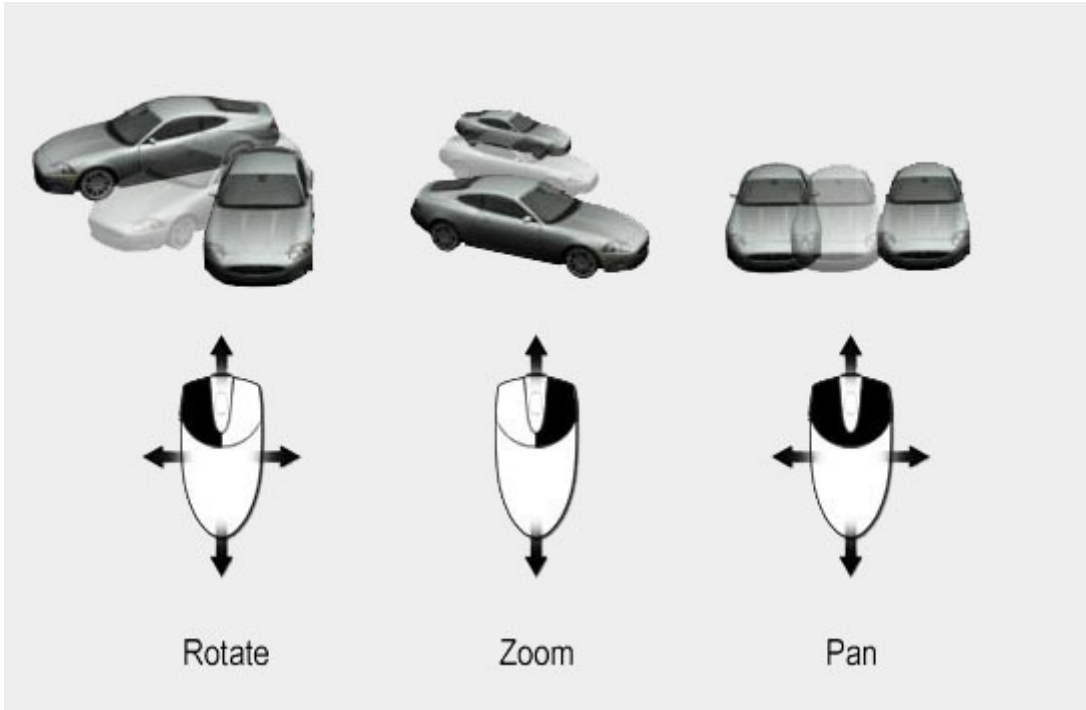
Using the ArchVision Viewport Controls

Use the content selection dialog to find the model that you want to view for placement into Photoshop. Next, use the x, y and z sliders beneath the object to rotate it into the desired position. Once the desired placement position is achieved, click on Ok and the object will appear on a new layer in Photoshop.



Navigation

Hold down the left mouse button to rotate the object in the ArchVision Viewport. To Zoom in or out use the right mouse button and drag it backwards or forwards. Hold down both the left and right mouse buttons to pan the object around in the viewer.



For additional assistance using RPC Technology, please visit www.archvision.com or contact our live Support Team Monday-Friday 9am-5pm (EST)

Copyright 2008 ArchVision, Inc