

RPC for Microstation V8

[Bentley](#) SELECT Subscribers can enable RPC support for Microstation 8 by downloading the most recent Visualization Enhancement package from Bentley Select Services, which requires a paid subscription. Please contact [Bentley SELECT Services](#) for additional information. After the Visualization Enhancement package has been installed, the following steps can be used to place RPC Content into a Microstation scene.

Placing Content

Step 1: Select **Tools** from the menu bar.

Step 2: Select **Visualization** from the list of tools.

Step 3: Select **RPC** from the remaining options.



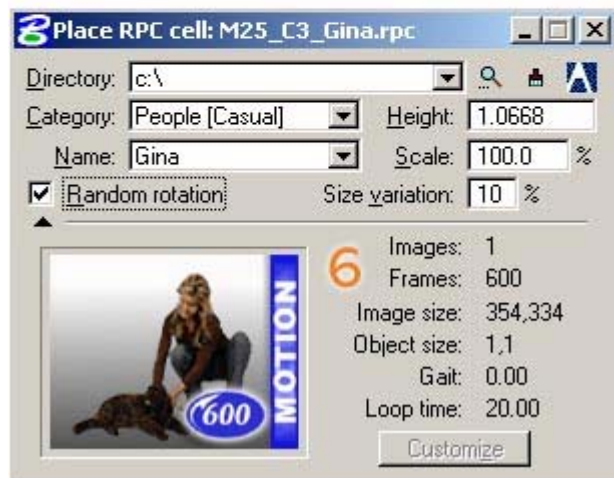
Step 4: A floating selection tool will appear.



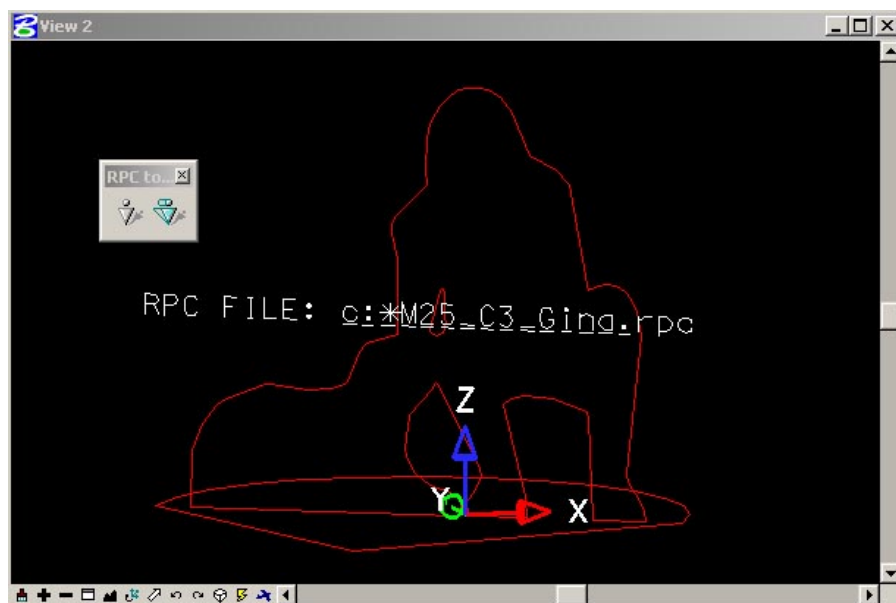
Step 5: Select the **RPC Place** icon. This will launch the Place RPC Cell dialog.



Step 6: From the Place RPC Cell dialog, click on the magnifying glass icon to browse to the directory where your RPC Content is located. Once loaded, all of your RPCs will be available by using the Category drop-down menu. The Name drop-down allows you to select which RPC within that library to place.



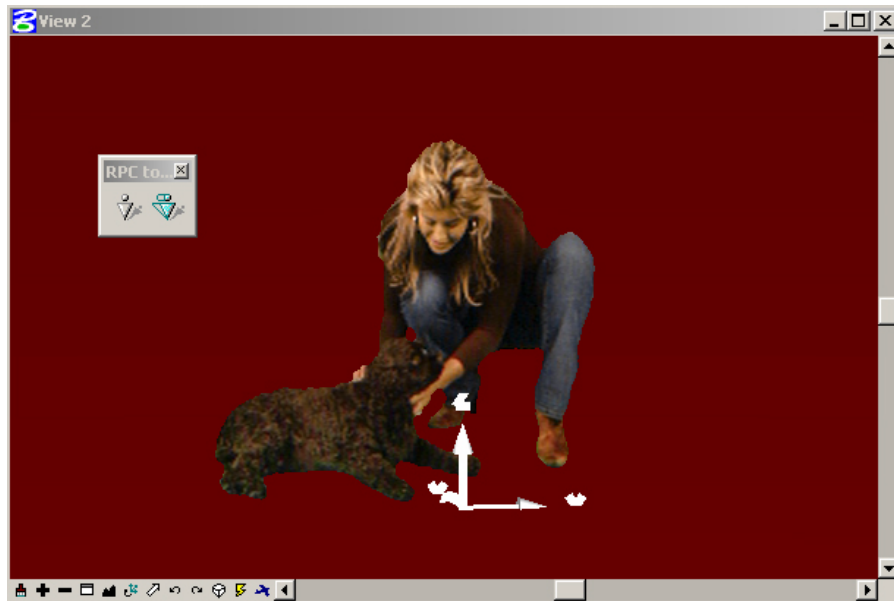
Step 7: A placement object will become available with an arrow depicting where the front of the RPC will appear. Move the mouse with the left button depressed to orient the RPC as desired. Release the left mouse button to place your RPC. Once the Cylinder is placed, move the mouse to adjust the arrow around the z-axis, which will allow for fine-tuning of the direction RPC will face when rendered.



Step 8: After placing the RPCs, click the Edit RPC Icon or any other tool to exit the placement dialog.

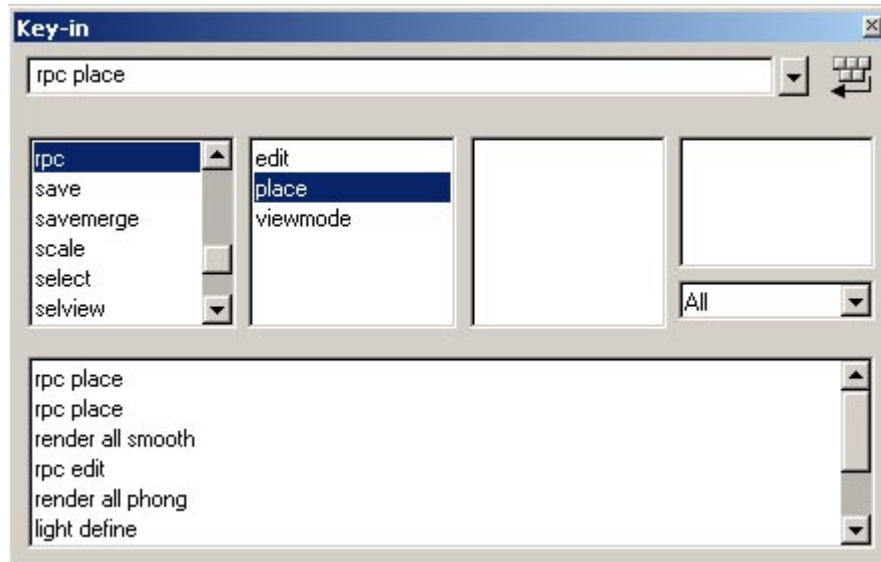


Step 9: Select a renderer, such as smooth or phong, and the RPC will render when you click in the view.



Key-in Placement

RPCs can be added to a scene by using the key-in phrase "**rpc place**".



For additional assistance using RPC Technology, please visit www.archvision.com or contact our live Support Team Monday-Friday 9am-5pm (EST)

Copyright 2005 ArchVision, Inc