

RPC for Photoshop - PC 5.5 & Higher

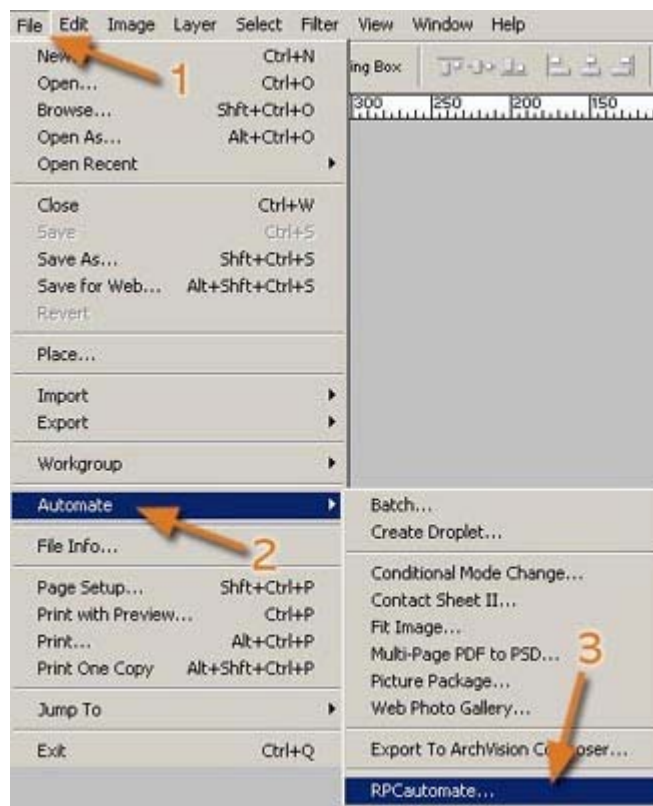
Installing the RPC Plug-in

Start by running the RPC Plug-in installer. Be sure to select the correct version of Photoshop when prompted by the installer dialog.

Accessing the RPC Plug-in

To open the RPC Interface in Photoshop, you must first open a file where you would like to place the RPCs. The following steps will open the RPC Automate dialog:

- 1) Select File.
- 2) Then select Automate.
- 3) Next, select RPC Automate. The RPC Automate dialog will then launch.



Configuring the RPC Plug-in

Now, you will need to set the path to the ArchVision Content Manager (ACM) so that your RPC content becomes available to be placed in Photoshop. With the RPC Automate dialog open:

1) Begin by selecting **Configure Content** on the RPC Automate menu. The RPC Content Configuration dialog will open.

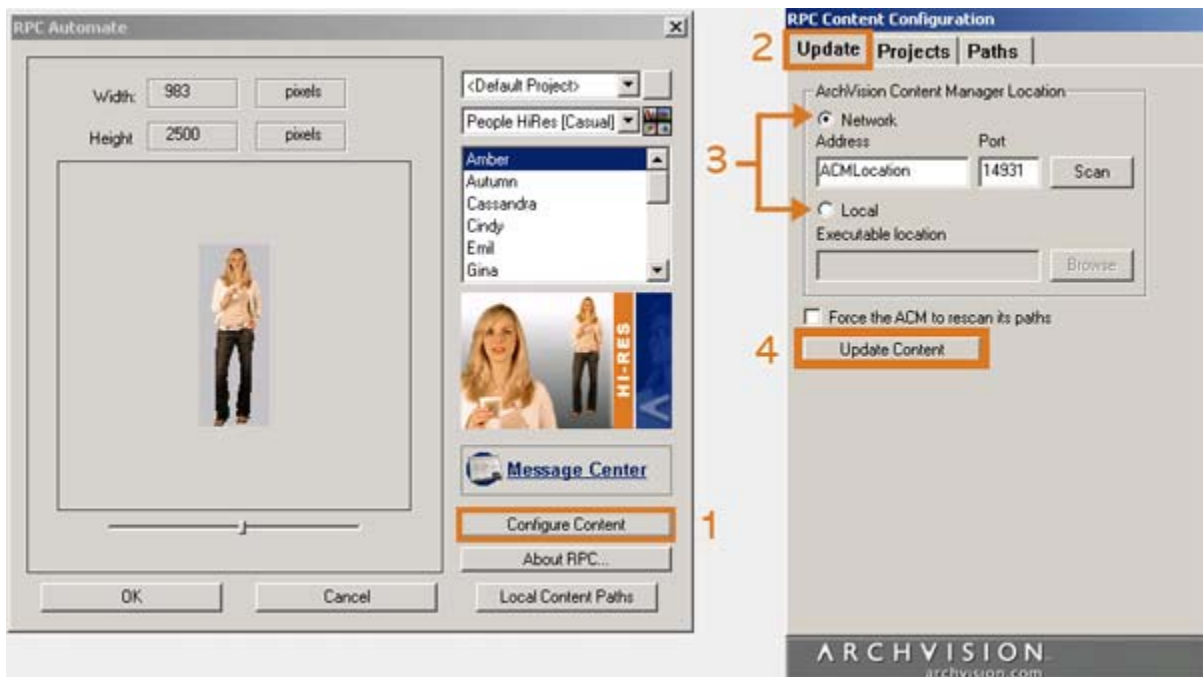
2) Select the Update Tab.

3) Click the radio button designating the location of your ACM.

If the ACM is located on your network, select **Network** and then type in the machine name or select Scan to choose it from a list of available ACMs. If the ACM is installed locally, select **Local** and browse to C:\Program Files\ArchVision\ArchVision Content Manager, for a file named rpcacmapp.exe.

4) Next, select **Update Content** to access all RPCs available in the paths tab of the ACM.

At this point, the RPC Plug-in has been successfully installed and configured and is ready to use.

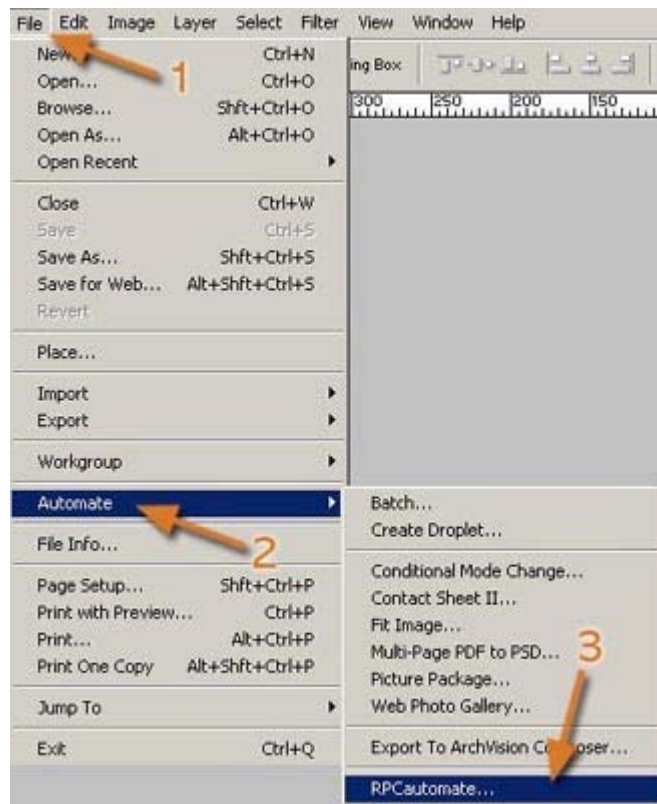


Placing RPC Content

Once you have opened the desired file where you would like to place the RPC Content:

- 1) Select File.
- 2) Next, select Automate.
- 3) Then select RPCautomate from the Automate options.

The RPC Automate dialog will then launch.



- 4) From the RPC Automate dialog, select the desired RPC Library from the drop-down menu options.
- 5) Next, select the name of the RPC to be placed.
- 6) Use the rotation slider tool to adjust the orientation of your RPC before placing.
- 7) Click **OK** to place the Content onto your file as a separate layer.

