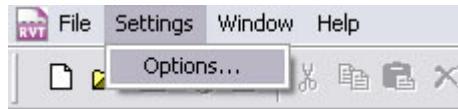


## RPC for Revit

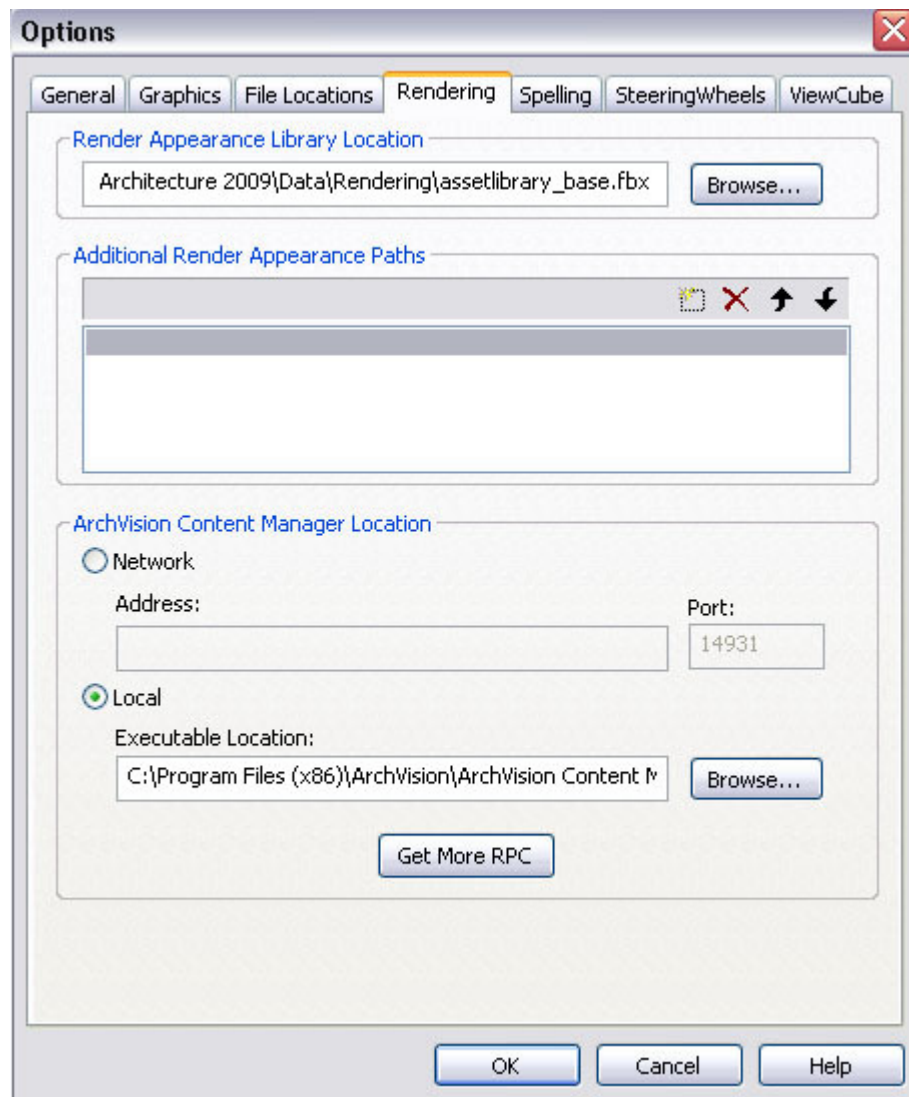
Revit – 2009+

### Configuring Revit to Connect to an ACM

1: Prior to entering a project, click on **Settings** and then choose **Options**.



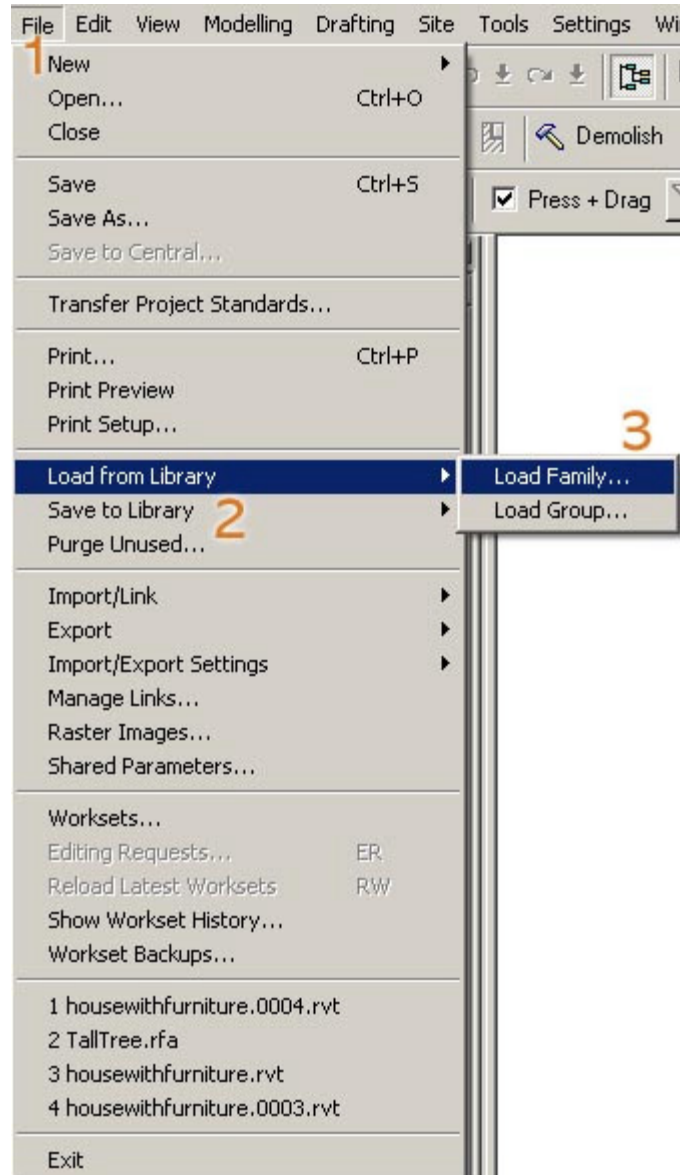
2: In the Options dialog specify the location of the ACM and then click on **ok**.



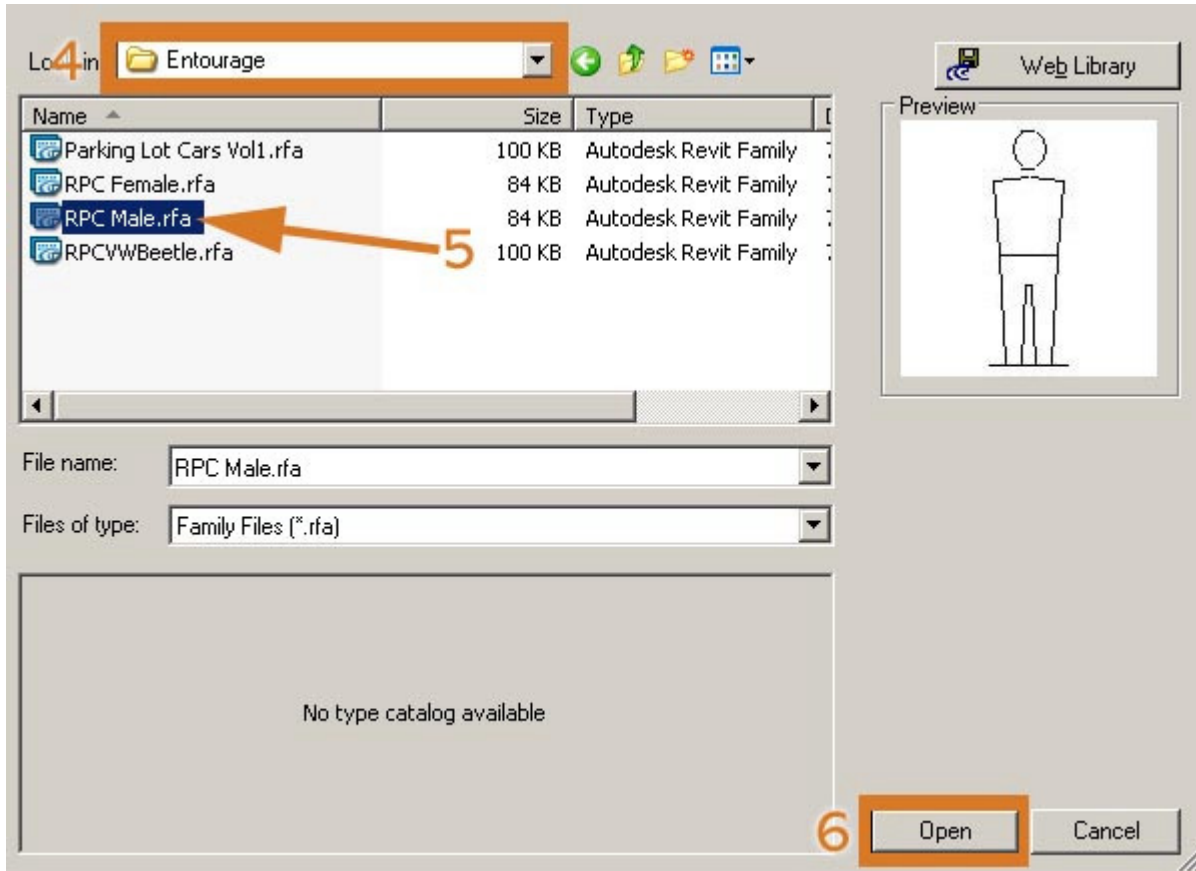
Prior to placing an RPC object into Revit, you will first need to load an RPC Family file into the Entourage list in the Project Browser.

## Adding the RPC Family to the Project Browser:

- 1: Select **File**.
- 2: Choose **Load from Library**.
- 3: Click on **Load Family**.



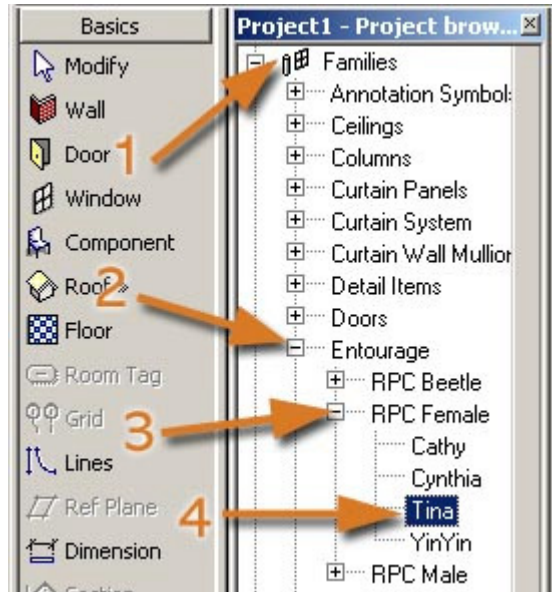
- 4: Browse to **Entourage** in the Imperial Library directory.
- 5: Choose the RPC Family that you wish to load.
- 6: Click **Open**



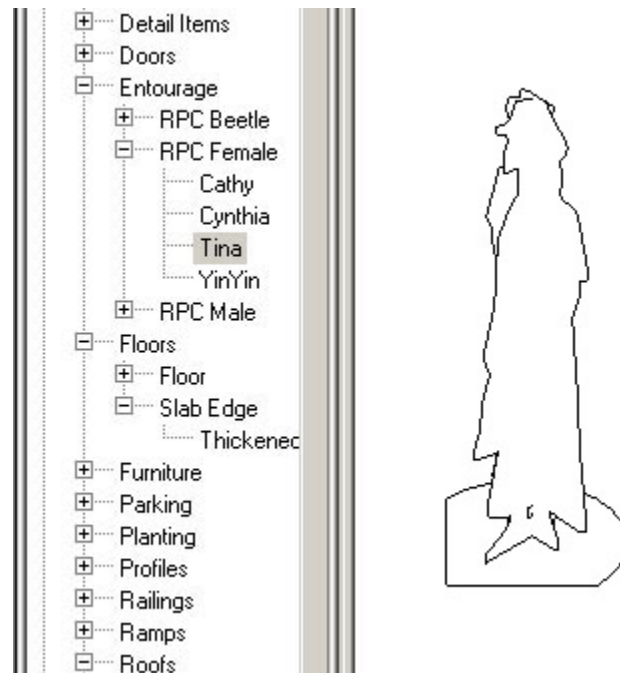
The Entourage file with the selected RPC Family should now be available in the Project Browser.

### Placing RPC Content

- 1) Select Families.
- 2) Select Entourage.
- 3) Select the RPC Family.
- 4) Select the RPC.



Once the RPC is selected, drag it into the scene. You will see a placement icon until the RPC is rendered.



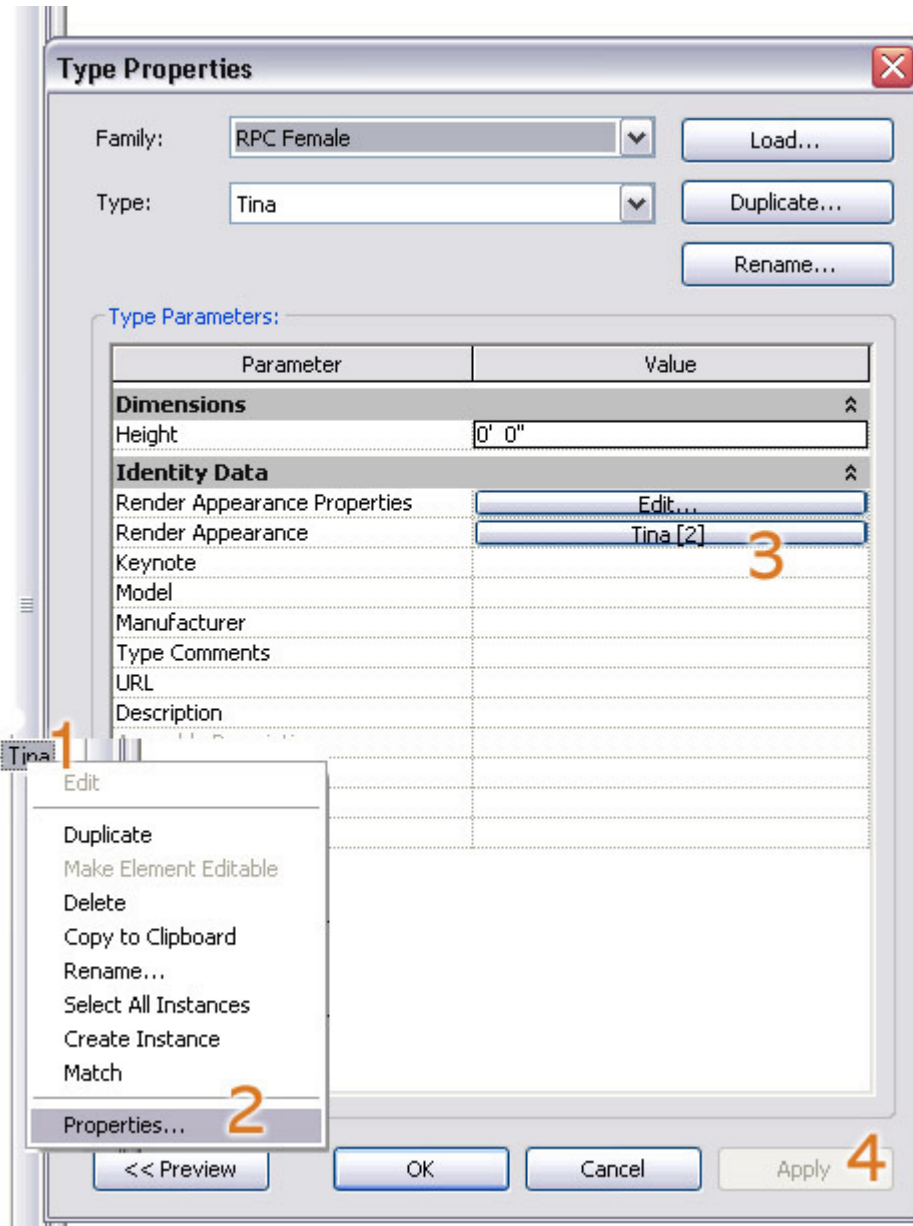
The RPC will be Photorealistic when rendered.



### Changing the RPC

The Entourage families can be modified to accommodate almost all of your RPC Content. The following steps will show you how to change the path configured to the selected RPC to a different RPC.

- 1) Right click on the name of the RPC.
- 2) Select Properties.
- 3) Left click on the RPC Filename and browse for another RPC.
- 4) After the desired RPC is located, select **Apply** to commit the change.



Use this process to add then rename additional members to the RPC Family. You can then save the RPC Family by selecting **File** followed by **Save to Library** then **Save Family**. The family can later be loaded into the project browser by choosing **Load from Library** and then **Load Family** from the **File** menu.

**For additional assistance using RPC Technology, please visit [www.archvision.com](http://www.archvision.com) or contact our live Support Team Monday-Friday 9am-5pm (EST)**

*Copyright 2008 ArchVision, Inc*