

RPC for Autodesk VIZ

Autodesk Viz - R3, R4, 2005, 2006,2007 & 2008

Installing the RPC Plug-in

Start by running the RPC Plug-in installer. Be sure to select the desired version of Autodesk Viz. It is recommended that you used the latest version of the RPC Plug-in available for Autodesk Viz for optimum performance. The latest version of the RPC Plug-in can be downloaded from www.archvision.com.

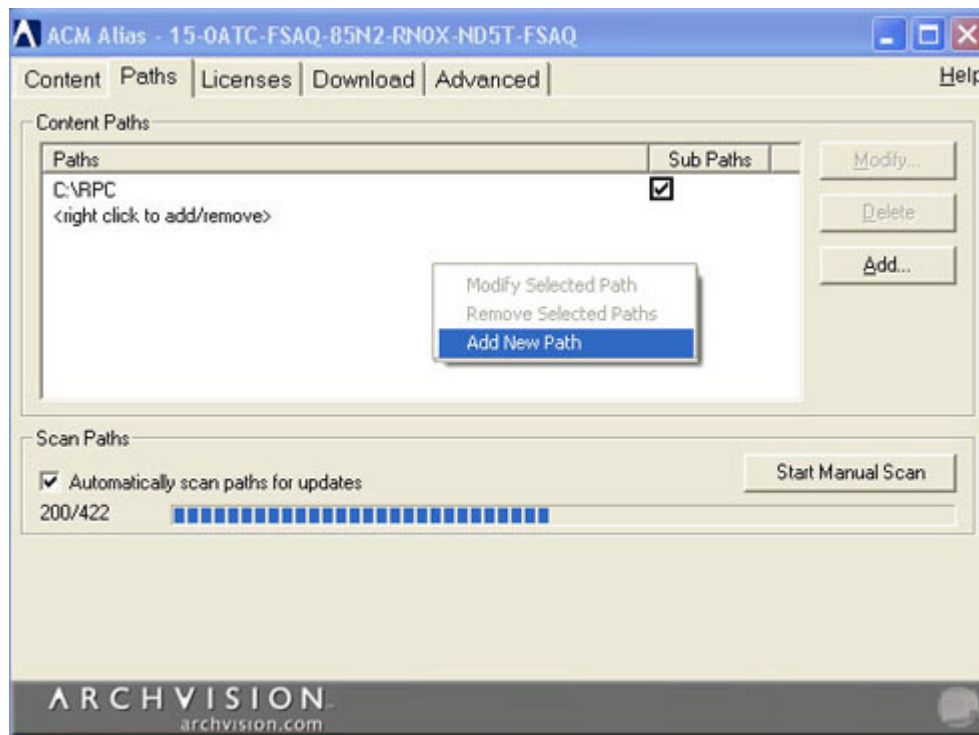
Configuring Content Paths

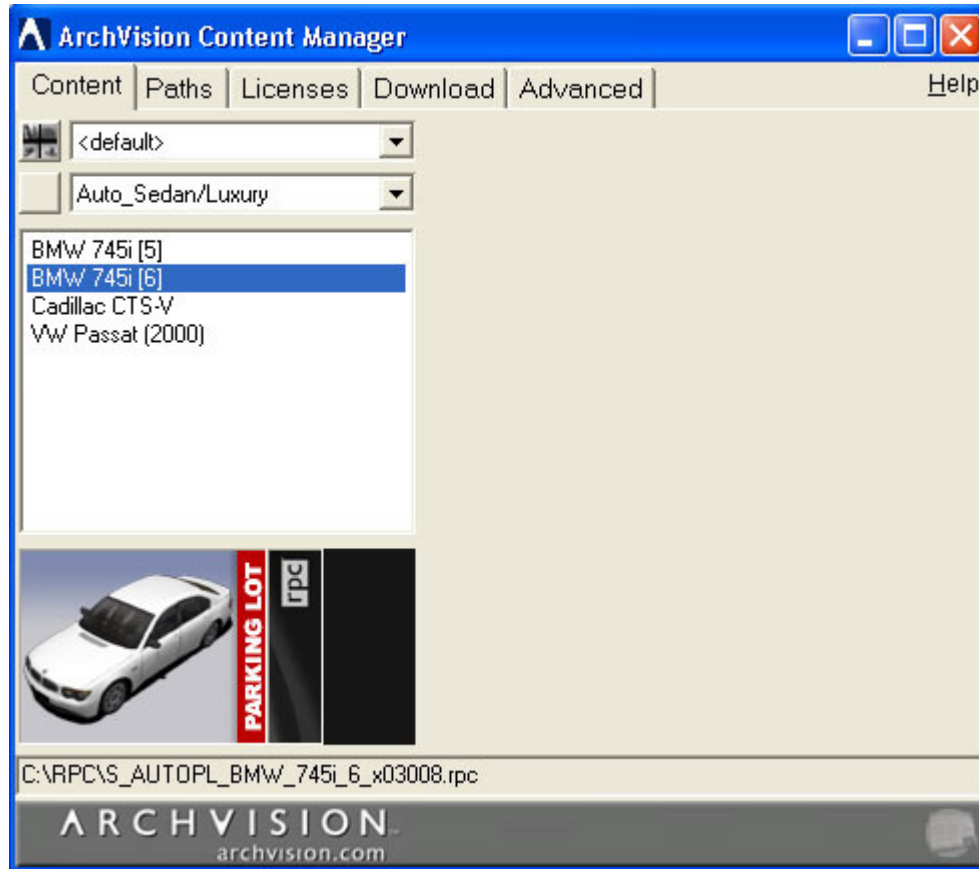
The ArchVision Content Manager (ACM) manages all of your content paths. It is necessary to configure content paths in the ACM to access your RPC Objects. You can access the ACM by double clicking on the icon in the system tray or selecting Start->Programs->ArchVision->ArchVision Content Manager->ArchVision Content Manager.

Step 1: Select the Paths Tab

Step 2: Select Add a Path and then browse for the location of the RPC Objects.

Step 3: Choose Scan Paths. All RPC Objects detected will appear under the current content dialog.





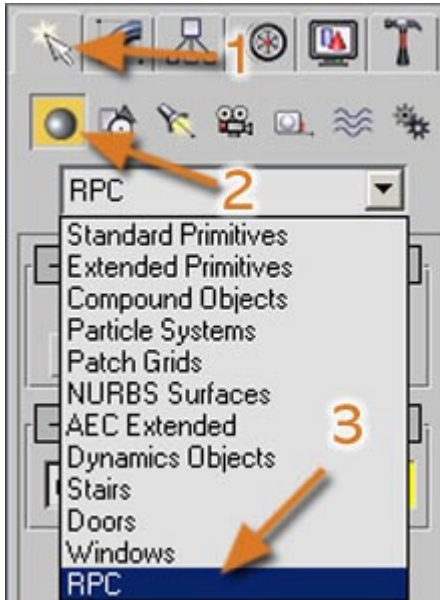
Accessing the RPC Plug-in

Step 1: Select the Create Panel.

Step 2: Click on the Geometry tool.

Step 3: Choose RPC from the geometry drop-down menu.

The RPC Selection Dialog will then appear.



Configuring the RPC Plug-in

Once the installer is finished, you will need to configure a path to the ArchVision Content Manager (ACM).

Step 1: Select **Configure Content**.

Step 2: Click on the **Update** tab.

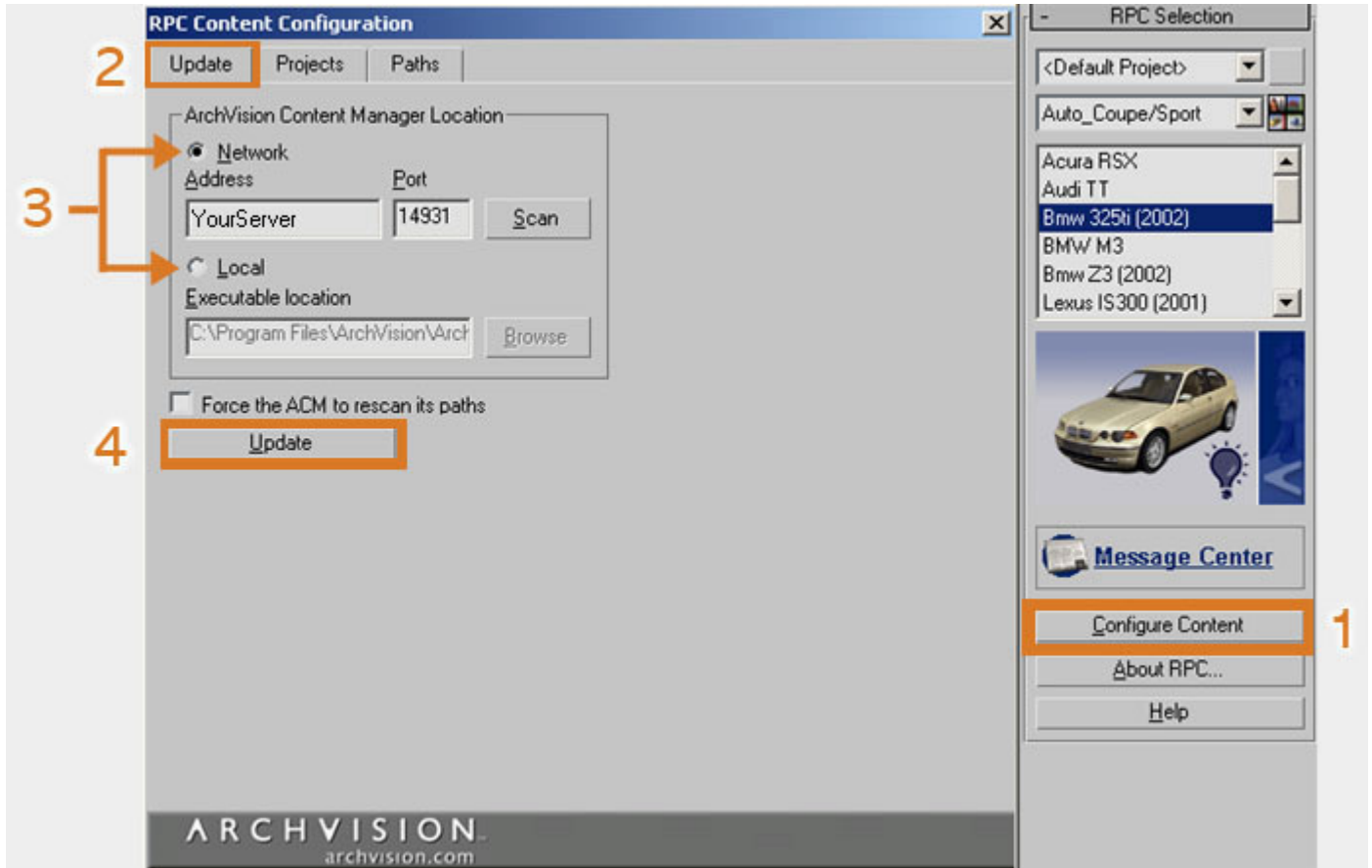
Step 3: Specify a path to the ACM.

Note: If the ACM is located on your network, select **Network** and then type in the machine name, IP address or select Scan to choose it from a list of available ACMs.

If the ACM is installed locally, select Local and browse to C:\Program Files\ArchVision\ArchVision Content Manager, for a file named rpcacmapp.exe.

Step 4: Select Update Content and the RPC Content in the path of the ACM will now be available.

At this point, the RPC Plug-in has been successfully installed and configured and is ready to use.



Placing RPC Content

To place an RPC object into Autodesk Viz:

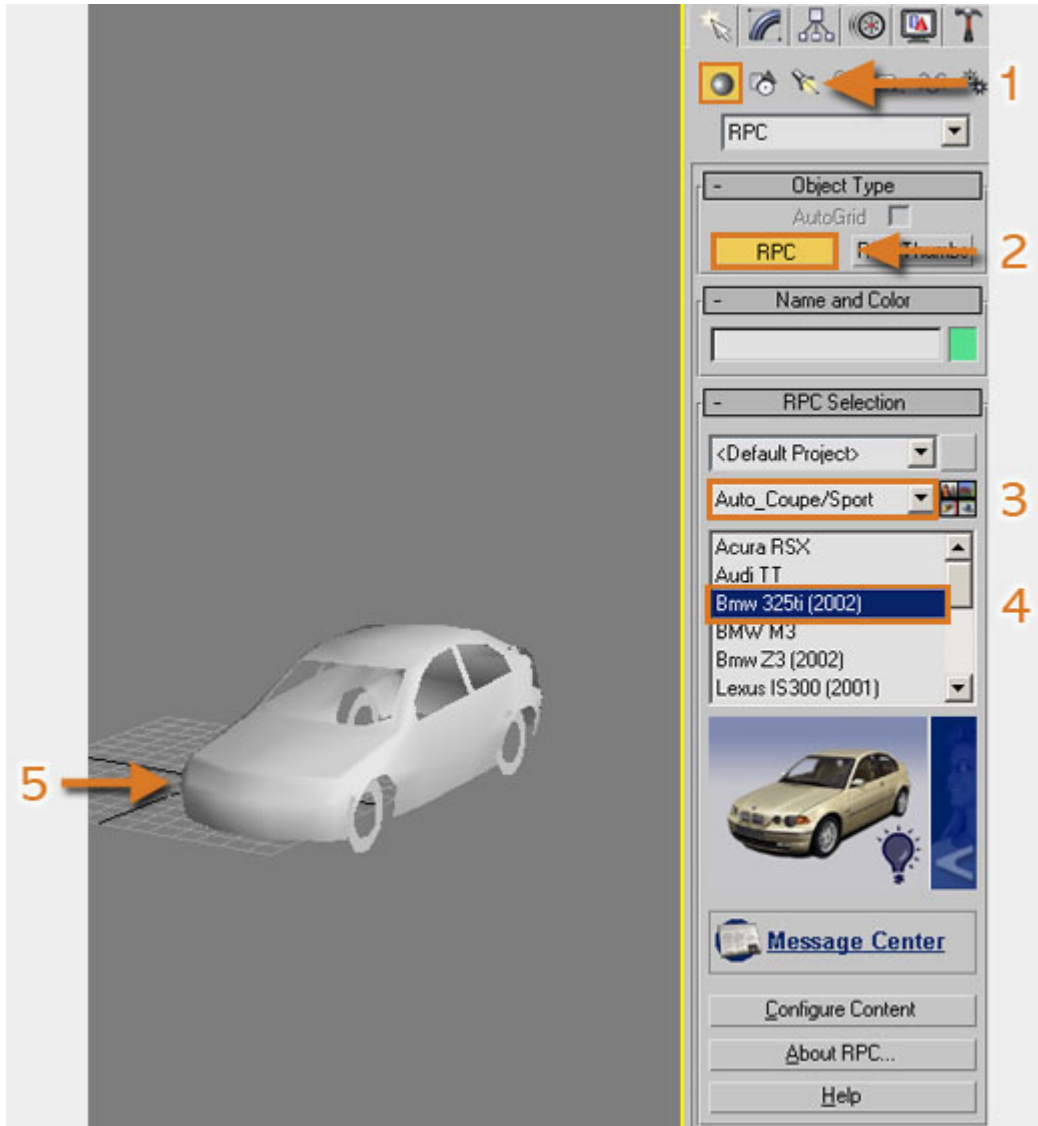
Step 1: Select RPC from the Geometry drop-down on the Create Panel.

Step 2: Click the RPC button that appears under Object Type. The RPC Selection rollout will then appear.

Step 3: Select the Update Content button located on the RPC Interface. All the content libraries should then be listed.

Step 4: Select the desired RPC Library from the drop-down menu and then click on the name of the RPC that you would like to place in your scene.

Step 5: Place the cursor in scene where the RPC is to appear and hold the left button of the mouse down. Moving the mouse while the left button is depressed will allow you to rotate the direction that the RPC is facing. Release the button when the RPC is position desired.



For additional assistance using RPC Technology, please visit www.archvision.com or contact our live Support Team Monday-Friday 9am-5pm (EST)
Copyright 2008 ArchVision, Inc