

ArchVision Composer

Composer 2005

Configuring ArchVision Composer

Composer is dependent on the ArchVision Content Manager(ACM) to obtain a license. When ArchVision Composer is purchased, a license is made available to the ACM selected during the purchasing process. The license is assigned to a particular ACM according to the ACM's unique ID number. To access the license via the ACM, the user must perform an import. Once the Composer license is received by the ACM, it is then necessary to configure Composer to locate the ACM. All licenses are displayed under the Licenses tab of the ACM.

Configuring the ACM

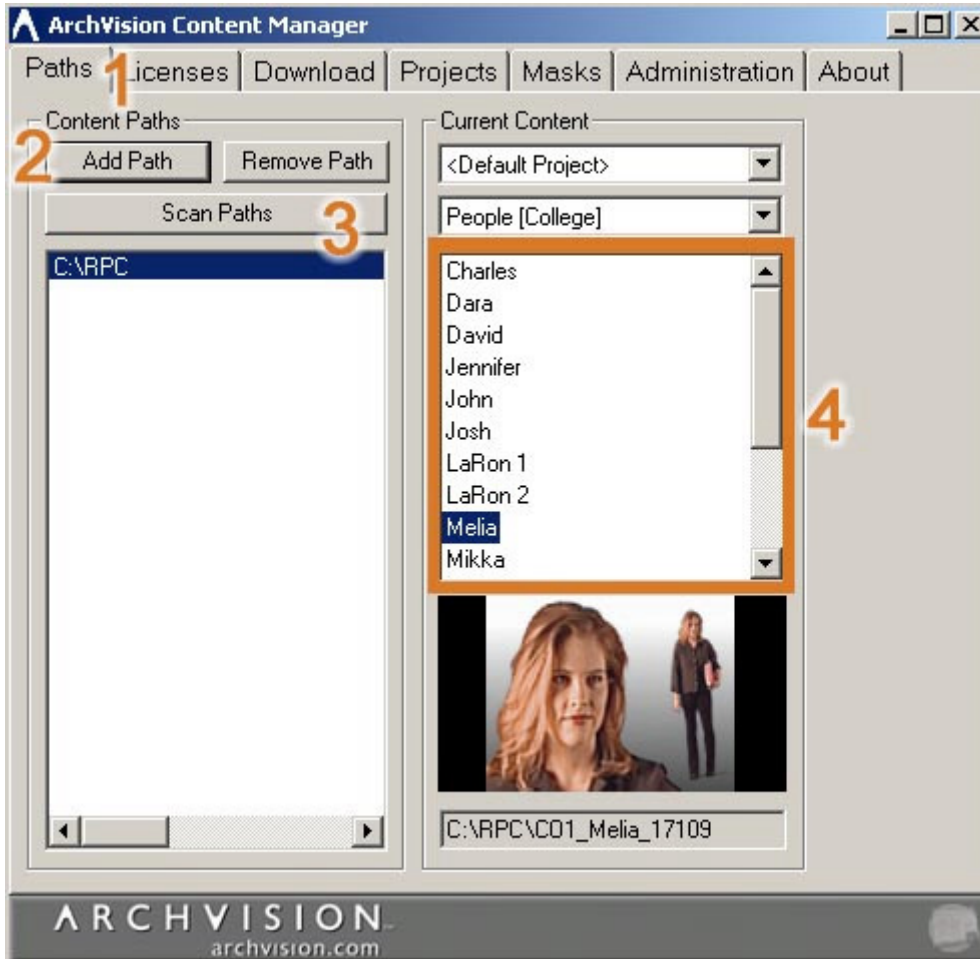
The ACM manages all content from a central location. It is recommended that the ACM be installed onto a Network Server if RPC Content will be accessed by multiple users. Users not sharing RPC files can install the ACM locally.

Creating Paths

Composer receives all RPC Content paths directly from the ArchVision Content Manager. Therefore it is necessary to Add Paths to the RPC Content using the ACM.

To Configure a Path:

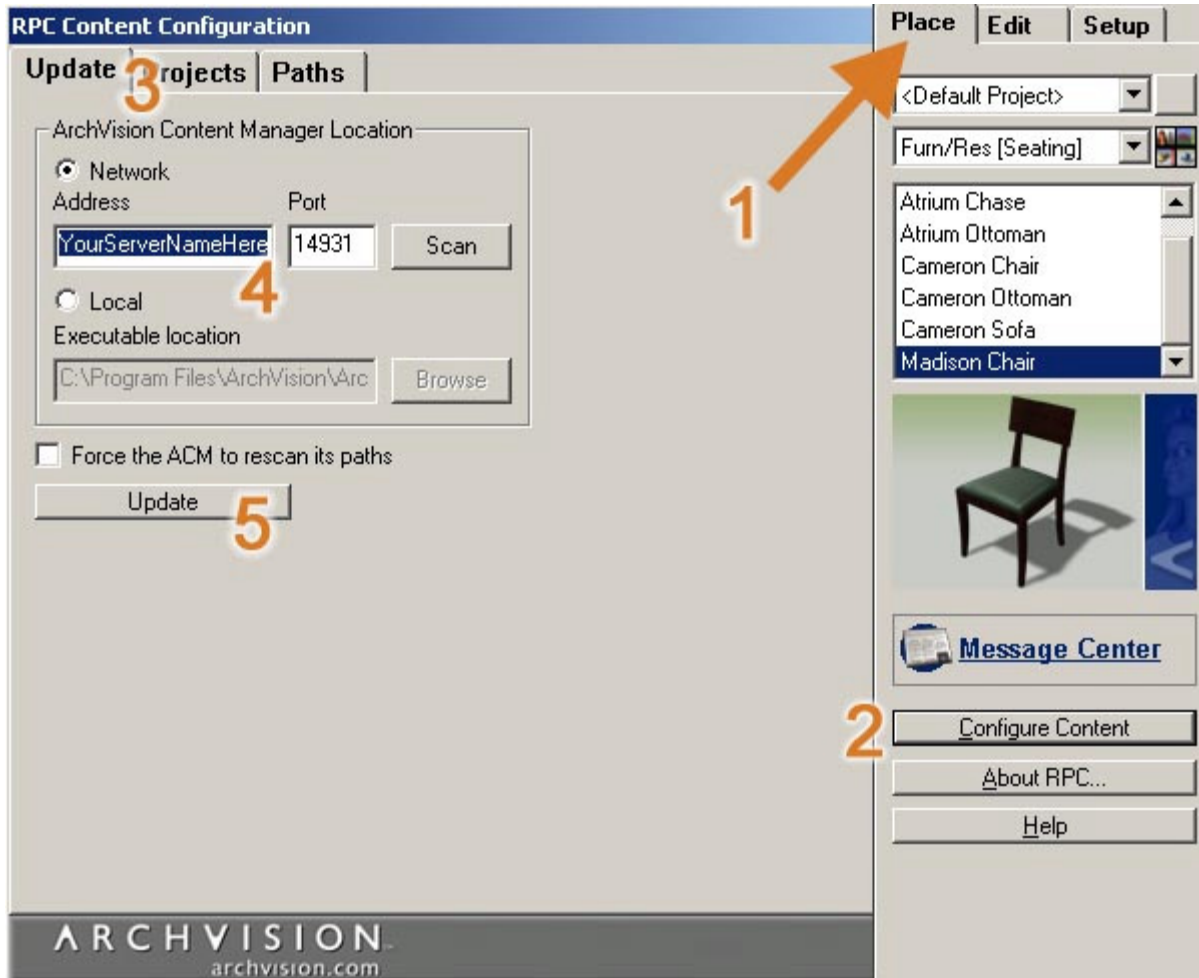
1. Select the Paths Tab of the ACM
2. Select Add Path then browse to the location of the RPCs and select ok.
3. Select Scan Paths.
4. Verify all available RPC Content located when the path was scanned.



The next step is to Open Composer and configure a path to the ACM. The ACM must be running for Composer to access a license. Once this step has been configured, you will not need to perform it again unless new RPC Content is added, removed or the path changes.

To Configure a Connection to a Local ACM:

1. Select the Place Tab.
2. Select Configure Content to open the RPC Content Configuration Dialog
3. Click on the Update Tab.
4. Select Local and specify a path to the running ACM. The file to browse for is **rpcacmapp.exe**.
5. Finally, select **Update** and all Content available in the paths of the ACM will now be available for use in Composer.



All RPC Content in the path of the ACM should now be available to place into a Composer scene. If the path is configured correctly, all licensed content will render without the watermark.

For additional assistance using RPC Technology, please visit www.archvision.com or contact our live Support Team Monday-Friday 9am-5pm.

Copyright 2008 ArchVision, Inc