

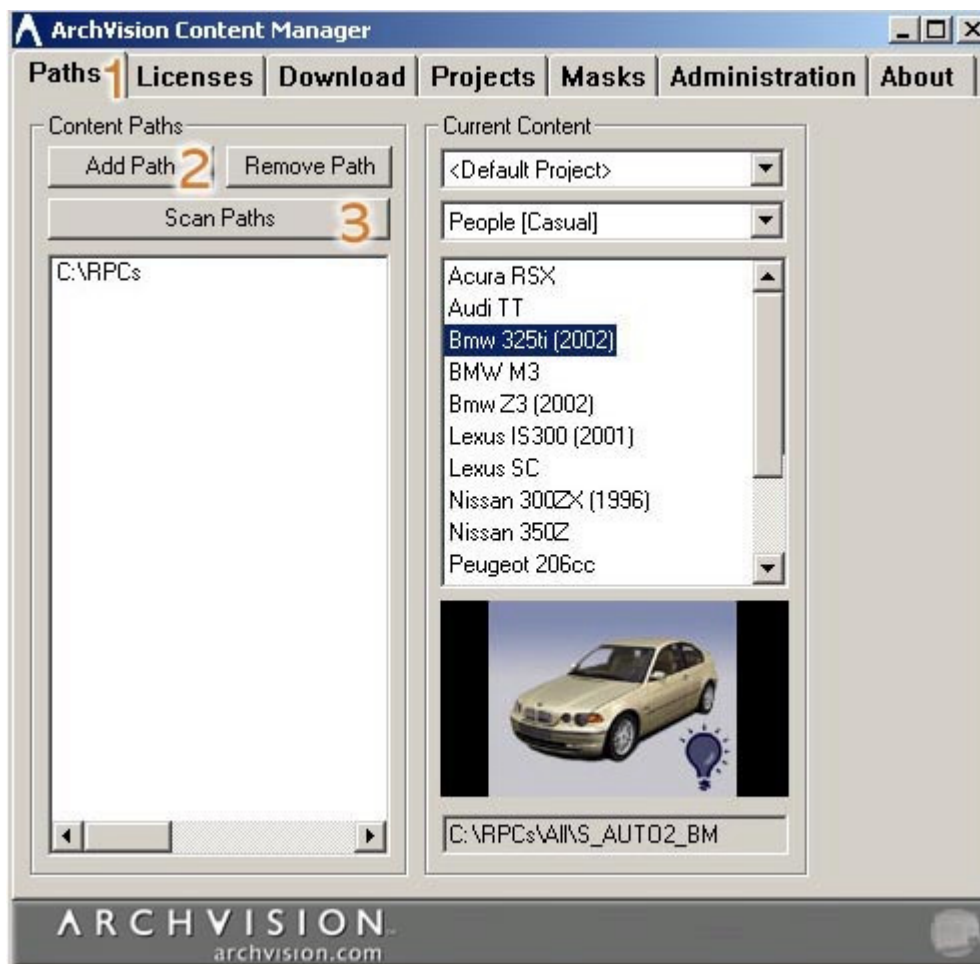
Configuring Content Paths

The ArchVision Content Manager (ACM) manages all of your content paths. It is necessary to configure content paths in the ACM to access your RPC Objects. You can access the ACM by double clicking on the icon in the system tray or selecting Start->Programs->ArchVision->ArchVision Content Manager->ArchVision Content Manager.

Step 1: Select the Paths Tab.

Step 2: Select Add a Path and then browse for the location of the RPC Objects.

Step 3: Choose Scan Paths. All RPC Objects detected will appear under the current content dialog.

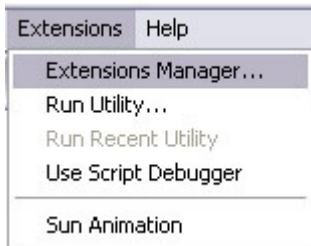


Note: The ArchVision Content Manager does not recognize subdirectories. Please create a path to each directory where content resides.

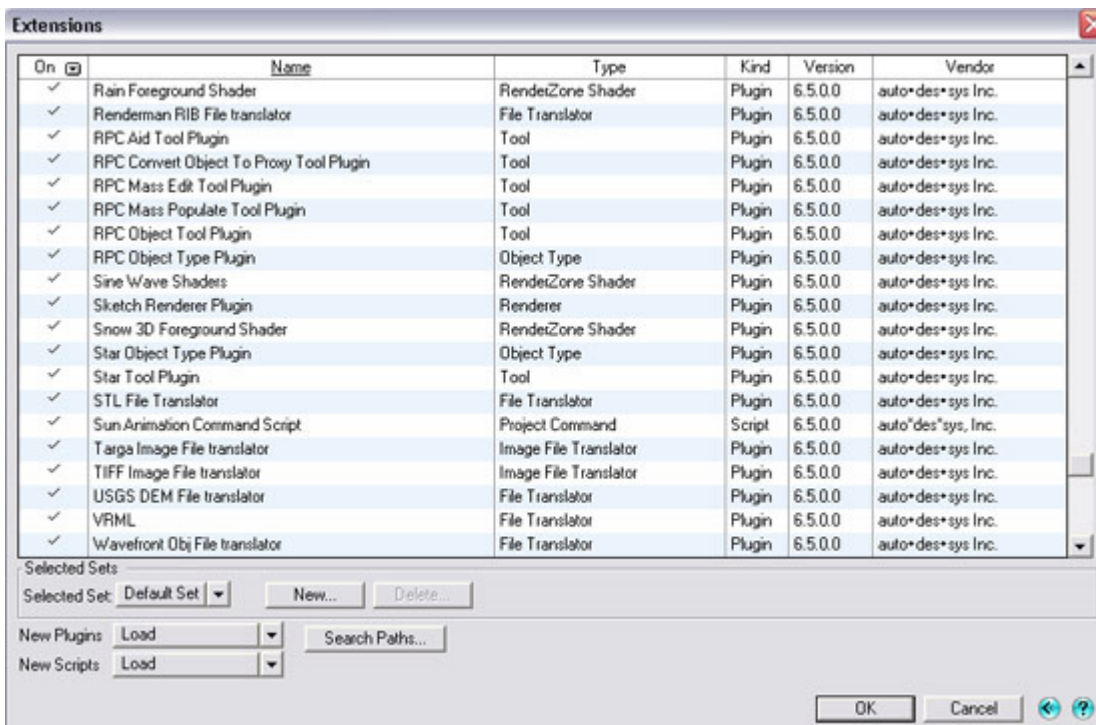
Loading the RPC Plug-in

Later versions of FormZ require that the RPC Plug-in components be loaded using the Extensions Manager.

To load the Extensions Manager click on **Extensions** then **Extensions Manager**



Make sure that all of the RPC Extensions are turned on.

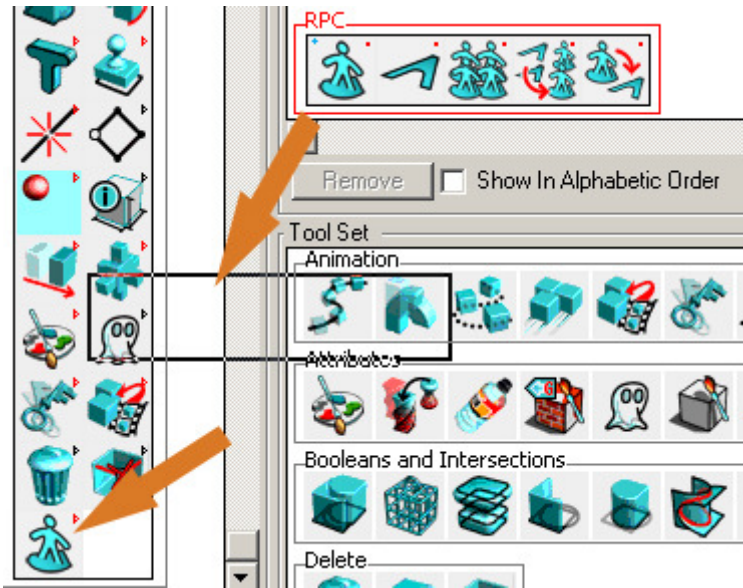


FormZ should then be restarted for the RPC extensions to load.

Accessing the RPC Plug-in

Step 1: To add the RPC Plug-in options to the Modeling Tools Palette choose Palettes-->Customize Tools.

Step 2: Drag the RPC Tool Palette from the Tool Palettes list to the Tool Bar on the Icons Customization dialog.



Step 3: Click on the RPC Object Icon to access the RPC Selection dialog.



The RPC Selection Dialog will then appear.



Configuring the RPC Plug-in

Once the RPC Plug-in has been installed, you will need to configure a path to the ArchVision Content Manager (ACM).

Step 1: Select **Configure Content**.

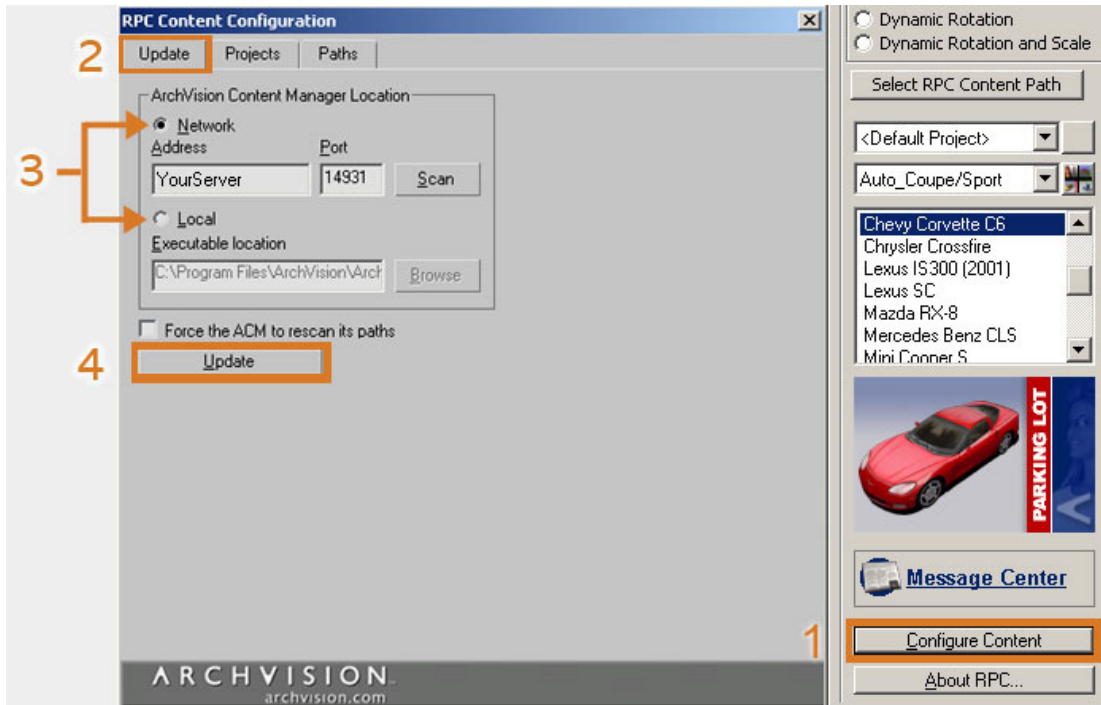
Step 2: Click on the **Update** tab.

Step 3: Specify a path to the ACM.

Note: If the ACM is located on your network, select *Network* and then type in the machine name, IP address or select *Scan* to choose it from a list of available ACMs.

If the ACM is installed locally, select *Local* and browse to *C:\Program Files\ArchVision\ArchVision Content Manager*, for a file named **rpcACMapp.exe**.

Step 4: Select **Update Content**. The RPC Content in the path of the ACM will now be available to place in your FormZ scene.



Placing RPC Content

To place an RPC object into FormZ:

Step 1: Choose an RPC from the Selection dialog.

Step 2: Left click in the view and the RPC will appear.

For additional assistance using RPC Technology, please visit www.archvision.com or contact our live Support Team Monday-Friday 9am-5pm (EST)

Copyright 2007 ArchVision, Inc